



EXPERT IN NON-INVASIVE NEUROMODULATION NESAS[®]

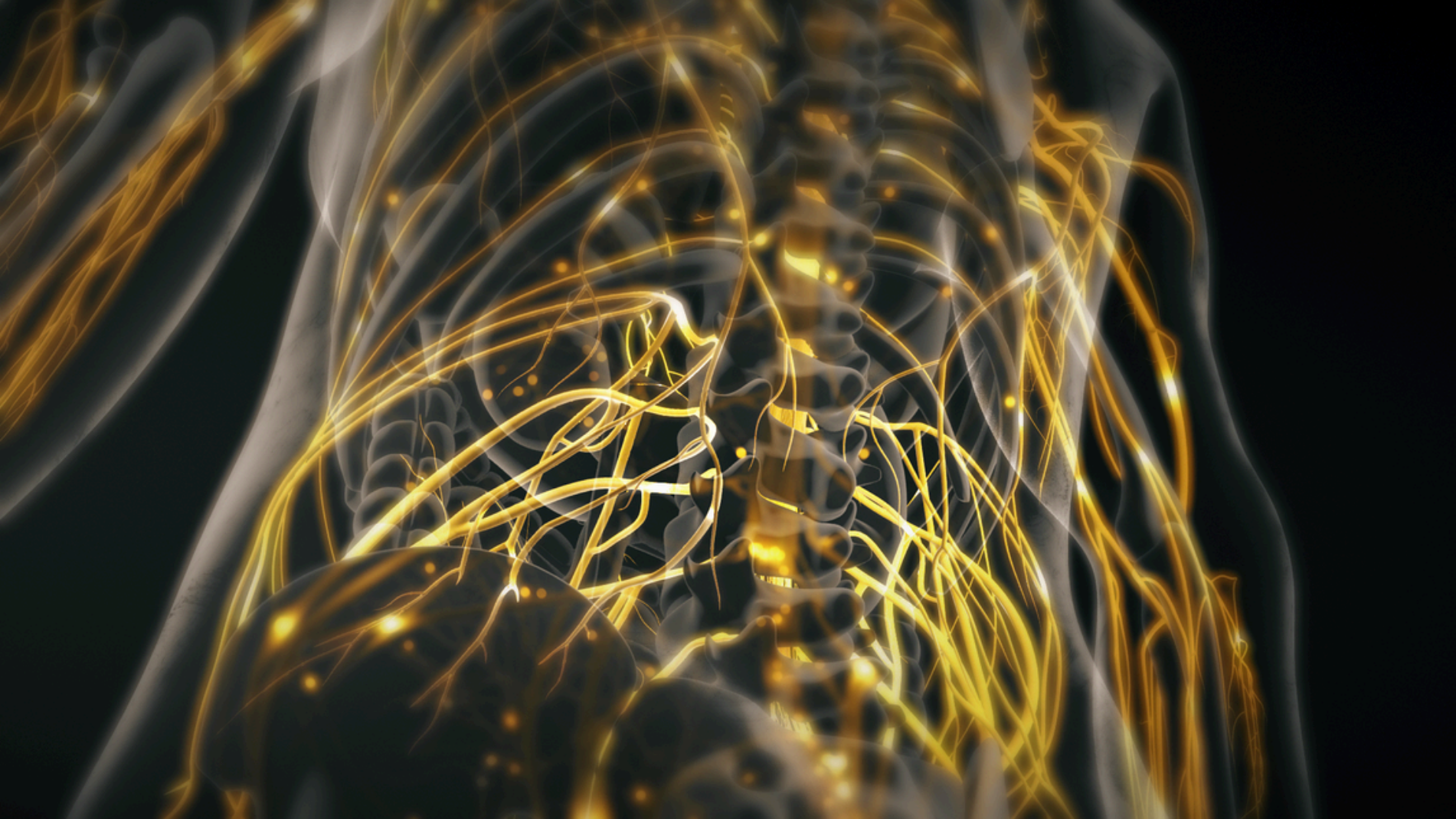
nasaACADEMIC[®]

OCTOBER 2025

Specialized training

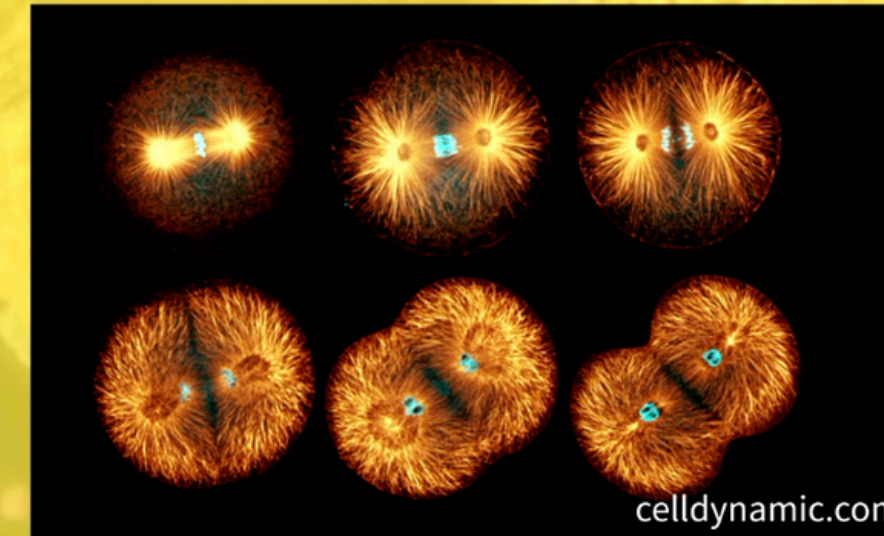
Start of course: 3 October 2025

End of course: 30 March 2026



Polar organization

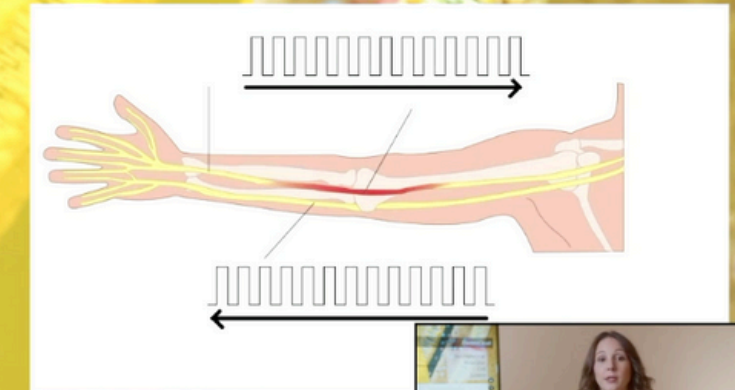
Electrical direction



Electrict level

Bioelectricity

Submolecular
Molecular
Cell
System



1Min Zhao, John V. Forrester, Colin D. McCaig, A Small, Physiological Electric Field Orients Cell Division. Proceedings of the National Academy of Sciences of the United S
1Ramirez P, Cervera J, Ali M, Nasir S, Ensinger W, Mafe S. Impact of Surface Charge Directionality on Membrane Potential in Multi-ionic Systems. J Phys Chem Lett. 17 de
1Wang E, Zhao M, Forrester JV, MCCAig CD. Re-orientation and Faster, Directed Migration of Lens Epithelial Cells in a Physiological Electric Field. Experimental Eye Resear



NESA® NON-INVASIVE NEUROMODULATION SPECIALIST

The international training program for NESA® Non-Invasive Neuromodulation Experts is designed to educate students in the medical technology associated with NESA® Non-Invasive Neuromodulation.

Students will explore the theoretical physiological foundations of NESA® Microcurrents, along with various types and methodologies for treating the autonomic nervous system across all healthcare domains.

The training is enhanced by an understanding of evaluation methods grounded in current scientific evidence. This is a fully online specialized training program that must be completed successfully to earn the title of international specialist.

The ONLINE section will include recorded classes, activities, a forum, readings, and an assessment system comprising multiple-choice tests and video lectures. Students are required to complete all sections until they achieve 100% of the process and finalize the assessments. The virtual campus comprises four modules spread over five months of training. For first-time participants, completing the online portion of the training and obtaining the certificate is mandatory.

DURATION: October 3, 2025, to March 30, 2026 (5 months) LOCATION: NESA CAMP, NESA World® Virtual Campus

COSTS AND AVAILABILITY

Do you possess your X SIGNAL[®] medical device?

If you currently possess an X SIGNAL[®] medical device but have not yet undergone the training, you may register at no charge.

I WISH TO REGISTER

Would you like to repeat the training?

If you currently possess an X SIGNAL[®] medical device and wish to retake the training or acquire an additional spot for another individual in your clinic.

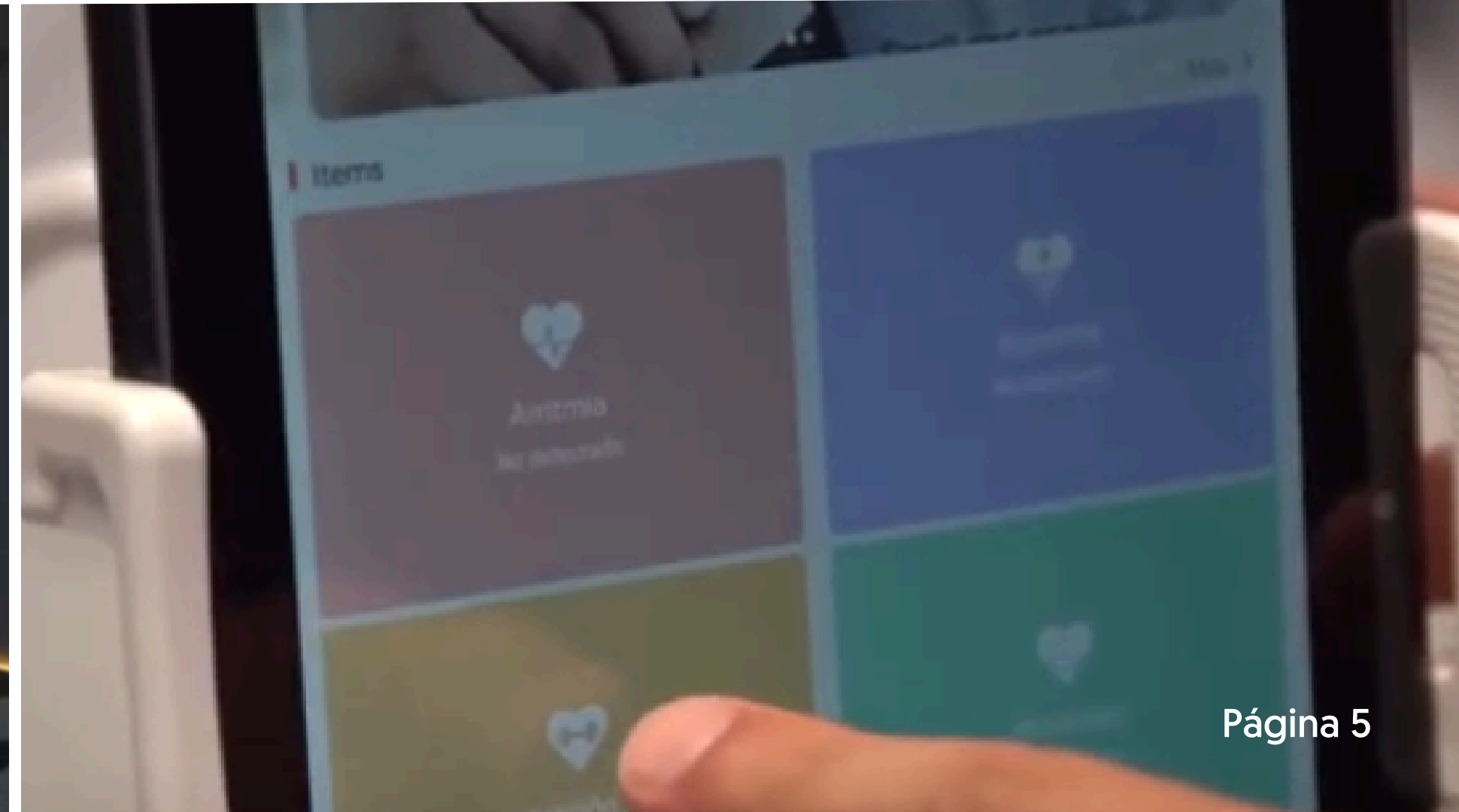
I WISH TO REGISTER

I do not possess an X SIGNAL[®] medical device.

If you do not possess an X SIGNAL[®] medical device but wish to specialize in NESA[®] Non-Invasive Neuromodulation.

I WISH TO REGISTER

REGISTRATION OPENS ON 1ST SEPTEMBER 2025



EXPERT VIRTUAL CAMPUS



The international specialized training in Noninvasive Neuromodulation (NESA®) occurs on a 24-hour virtual campus that is both intuitive and dynamic. Students will have access to recorded classes, live webinars, activities, discussion forums, readings, and mandatory assessments to successfully complete the course and earn the certificate. Participants are required to finish all sections and pass the tests until they achieve 100% completion of the resources necessary for certification.

The virtual campus comprises four chapters featuring video lectures, reading materials, and valuable links.

This edition will have a limited number of spots, so we advise you to register at your earliest convenience.

If you are a first-time customer, you may enroll in the course at no cost and complete it to receive your certificate.

REGISTER NOW

CONTENTS OF THE NESA® EXPERT ONLINE CAMPUS

- MODULE 1.** Physiological principles of bioelectricity and the autonomic nervous system.
- MODULE 2.** FUNDAMENTALS OF NON-INVASIVE NEUROMODULATION NESA®
- MODULE 3.** THERAPEUTIC INTERVENTION USING NESA®
- MODULE 4.** COMPLEMENTARY CLINICAL DIMENSIONS



+25 hours of video instruction
(150 training hours in total)



Webinars
collaborate with the instructional team



Material
exclusive support download



Forum
consultation with educators



Bilingual material
in Spanish and English



Bilingual material
in Spanish and English

EVALUATION FRAMEWORK AND CERTIFICATION

To successfully complete the course, students are required to engage with 100% of the resources available on the VIRTUAL CAMPUS, in addition to completing three assessment tests. The objective is for students to comprehend and study the physiological principles of NESA neuromodulation and to pass the assessments. Upon successful completion and passing of the tests, a certificate will be awarded. Students who do not pass the tests will NOT be eligible to receive a certificate.



ULPGC COLLABORATOR PROFESSOR
DR. MARTÍN VÍLCHEZ

Clinical physiotherapist. PhD in Applied Research. Professor at both undergraduate and graduate levels. Academic Director of the NESA® Noninvasive Neuromodulation Expert Program.



ULPGC COLLABORATOR PROFESSOR
DR. RAQUEL MEDINA

Physiotherapist with a PhD in Neuroscience from the University of Las Palmas. Academic Director of the NESA® Non-Invasive Neuromodulation Expert Program.



PROF.
FABIOLA MOLINA

Clinical physiotherapist. Master's degree in clinical and experimental neuroscience. Postgraduate lecturer.



PROF.
MARIA GONZÁLEZ

Clinical physiotherapist. Master's degree in pelvic floor physiotherapy. Postgraduate lecturer.



PROF.
DR. ALEJANDRO MEDINA

Internal Medicine Specialist specializing in multimorbidity and the management of highly complex chronic patients.



GUEST PROFESSOR
MARIA JOSE MARTIN

Speech-language pathologist specializing in orofacial motor skills, with expertise in voice and neurorehabilitation. Educator in orofacial motor skills training programs.



GUEST PROFESSOR
ALBERT MORENO

Physiotherapist and Osteopath D.O. with a Master's degree in Sports Physiotherapy. National and international postgraduate faculty member.



GUEST PROFESSOR
DR. ISABEL GONZALEZ

Dentist and physician in translational medicine with a specialization in bone regeneration. Fellowship – ICOI and advanced studies in Pediatric Dentistry.



GUEST PROFESSOR
DR. JUAN MANUEL CEBALLOS

Neurosurgeon with a specialization in vascular pathology, epilepsy, and demyelinating disorders.



GUEST PROFESSOR
SANDRA NOGUÉS

Clinical psychologist, founder of the Confeel platform, and Director and CEO of BeBright Barcelona.

TEACHING STAFF

Composed of healthcare professionals specializing in ANS neuromodulation, in collaboration with professors and researchers from the University of Las Palmas de Gran Canaria.

FAQs - Frequently Asked Questions

What is the nature of the NESAWORLD® Non-Invasive Neuromodulation Expert course?

This specialized training program in ANS neuromodulation focuses on the learning and application of NESAWORLD microcurrents, encompassing a total of 150 hours. Students will be awarded a certificate upon successful completion.

2. What are the prerequisites for enrolling in the course?

Individuals possessing a university degree in Health Sciences, encompassing all health professions such as medicine, nursing, physiotherapy, pharmacy, psychology, nutrition, podiatry, occupational therapy, dentistry, and speech therapy, or a degree in Physical Activity and Sport, are eligible to enroll in the course. If you do not hold a university degree but own an X-SIGNAL® medical device, please reach out to the NESAWORLD® Customer Service Department for any inquiries (at@nesaworld.es).

3. I do not possess an X-SIGNAL® medical device nor am I a NESAWORLD® customer; can I still enroll in the course?

Yes, you may enroll without restriction as it is a course available to the public, contingent upon meeting the entry requirements. Please refer to FAQ #2.

4. Which mandatory assessments must I complete to acquire the certificate?

To successfully complete the course and obtain your certificate, you are required to view all virtual campus resources and pass all three assessment tests.

5. If I do not pass the tests, will I still be able to obtain the certificate?

No, to successfully complete the course and receive your certificate, you must fulfill 100% of the resources available on the virtual campus and pass the three assessment tests. These assessment activities are mandatory as specified in the curriculum and are essential for course completion and certificate attainment.

6. I have not successfully completed the course or taken the examinations. Am I permitted to retake the course?

You may enroll in the course an unlimited number of times by paying the requisite registration fee. Should your initial enrollment be subsidized and you do not successfully complete the course, you may retake it by paying the appropriate registration fee. The subsidy for customers with an X-SIGNAL® medical device is applicable only for your first attempt at the course.

7. Are there schedules available for the virtual campus?

No, the virtual campus will be accessible 24 hours a day, allowing you to study at your convenience, based on your time zone. Live webinars will adhere to specific schedules; however, they will be recorded, enabling you to view them at your leisure until the course concludes.

8. I have not had the opportunity to view all the videos and content. Could the course and virtual campus deadlines be extended to allow me to watch them?

No, the dates are official, and the course cannot be extended upon request. The test delivery dates are also fixed.

9. Is it possible to download content from the virtual campus?

All content from the virtual campus is available for download in PDF format. However, the videos cannot be downloaded, so you will need to view them while the course is active.

10. Am I able to download the recorded video classes and webinars from the expert?

No, the video classes and webinars are not available for download; they must be accessed through the campus during the five-month course duration.

**Specialize globally and maximize the benefits of NESAS®
Non-Invasive Neuromodulation.**

Train with leading experts in NESAS® medical technology.

**Engage and participate with the entire national and
international NESAS® community from any location.**